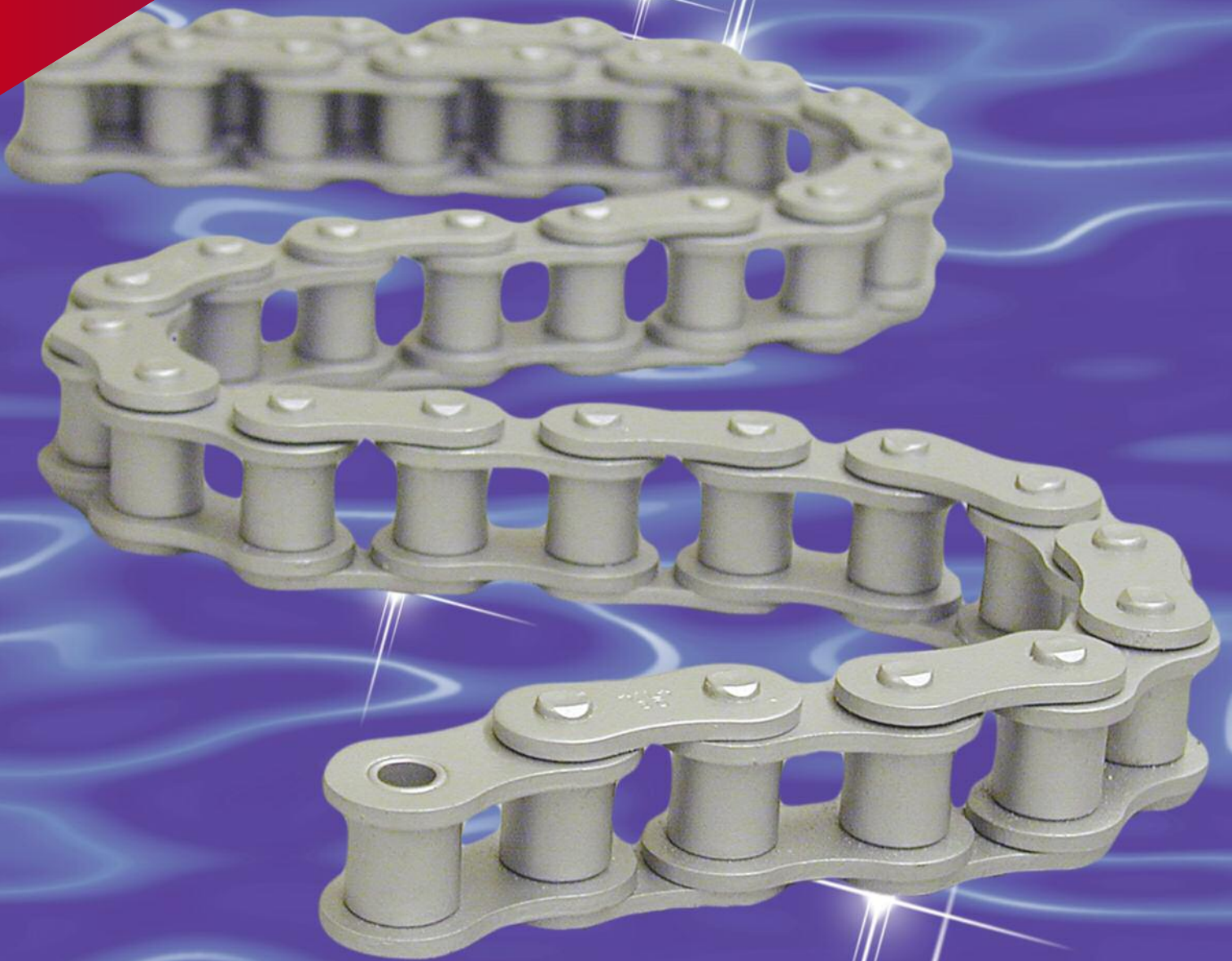


# ARMOR COAT CHAIN



Now Available from . . .



## **ALLIED-LOCKE INDUSTRIES**

ALLIED-LOCKE

# ARMOR COAT CHAIN



**20 Days Later**

after 480 hours in a 5% salt spray  
as per ASTM B117-94

- ★ Allied-Locke's ARMOR COAT CHAIN combines the strength of carbon steel with a corrosion resistant coating far exceeding the life of nickel or zinc plated chain.
- ★ All parts are treated twice prior to chain assembly, then treated again after assembly to insure complete coverage and maximum corrosion resistance.

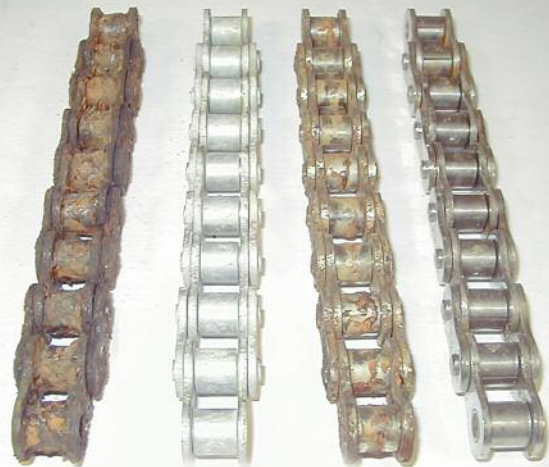
## Recommended Usages:

- Truck Wash Industry
- Car Wash Industry
- Parts Washdown
- Produce Washdown
- Irrigation Industry
- Fertilizer Conveying
- Water Treatment Facilities
- Seafood Processing
- Other Harsh Environments

**Please Note:**

Not intended for use in direct contact with food.

## Comparison of Carbon Steel, Armor Coat, Nickel Plated and Stainless Steel.



Carbon Steel

ARMOR COAT

Nickel Plated

Stainless Steel

**After 14 days of exposure to 5% salt spray solution.**

## Standard Sizes Available:

40, 50, 60, 80, 100, A2040, A2050, C2040, C2042, C2050, C2052, C2060, C2060H

***Other Chain Sizes Available as Special Orders.***

Distributed By:



## ALLIED-LOCKE INDUSTRIES

**TOLL FREE PHONE:** (800) 435-7752

**TOLL FREE FAX:** (800) 462-3130

Local Phone: (815) 288-1471 • Local Fax: (815) 288-7945

Green River Industrial Park • P.O. Box 509 • Dixon, Illinois 61021

**Visit Our Website at:** [www.alliedlocke.com](http://www.alliedlocke.com)